

# Lions Australia Uniform

## FORMAL UNIFORM MEN.

- Blazer – Single breasted wool /or synthetic Fabric in Pantone 350 (Green). Tailored with Lions Australia Embroidery on pocket. As per apex
- Shirt – Cotton /or blend in Pantone 393 (Wattle) to be worn with tie with Lions Australian Embroidery on Pocket or right of chest.
- Tie – Green Lions Australia Tie (swirl) can be found in Lions Shop. (International Presidents Tie must not be worn with official uniform).
- Trousers- Pantone 451(Taupe)
- Shoes and Belts – Tan Colour.

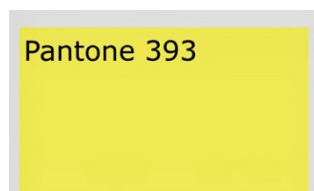
## FORMAL UNIFORM WOMEN

- Blazer- Single breasted wool /or synthetic Fabric in Pantone 350 (Forest Green). Women Fitted or normal tailored fit with Lions Australia Embroidery on pocket. As per appendix 1
- Skirt – Straight below knee length in wool /or polyester blend fabric in Pantone 451(Taupe) colour.
- Shirt – woman's Blouse with open neck collar in Pantone 393 (Wattle) as per pic.
- Women's scarf - Green (Swirl) found at the Lions Shop. To be worn around the neck under the collar of women's Blouse. (International Presidents scarf should not be worn with Australian uniform)
- Trousers – Tailored fit in wool or polyester blend Pantone 451(Taupe) colour.
- Dress – Fitted or semi fitted shift Dress in wool /or polyester blend in the Pantone 451(Taupe) colour below knee length. The dress should have a short sleeve and round neck. Please see drawings as to what is accepted.
- Shoes and Belts – Tan Colour. No open toe sandals.
- Bag – Tan Colour.

## THE INTERNATIONAL PRESIDENTS TIE AND SCARF

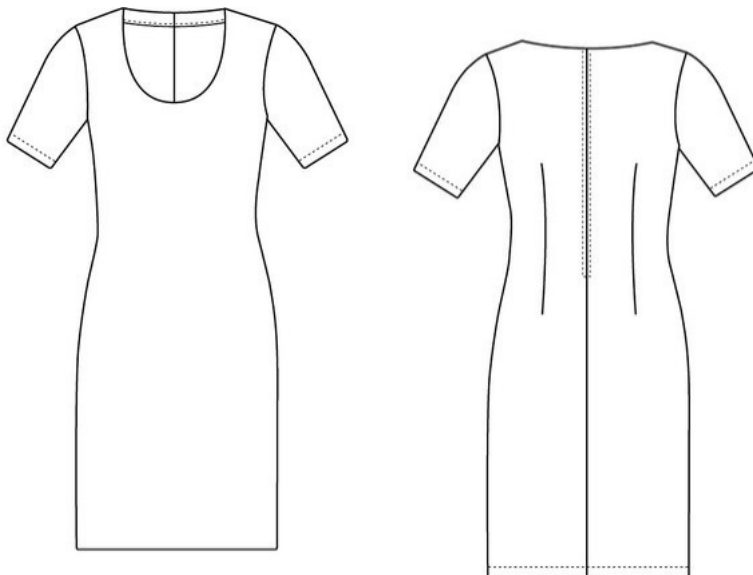
It is only appropriate for anyone who wants to wear the International Presidents Tie and scarf when you are not wearing the Australian Lions uniform and still want to acknowledge the International President of the time.

## COLOUR CHART FOR UNIFORM BOTH MALE AND FEMALE.





Fitted Shift Dress



Semi Fitted Dress



Tie and Scarf